

MONTHLY MEMBERSHIP PROGRESS REPORT

District 318 A

Results as of: 5/31/2024

GMT:

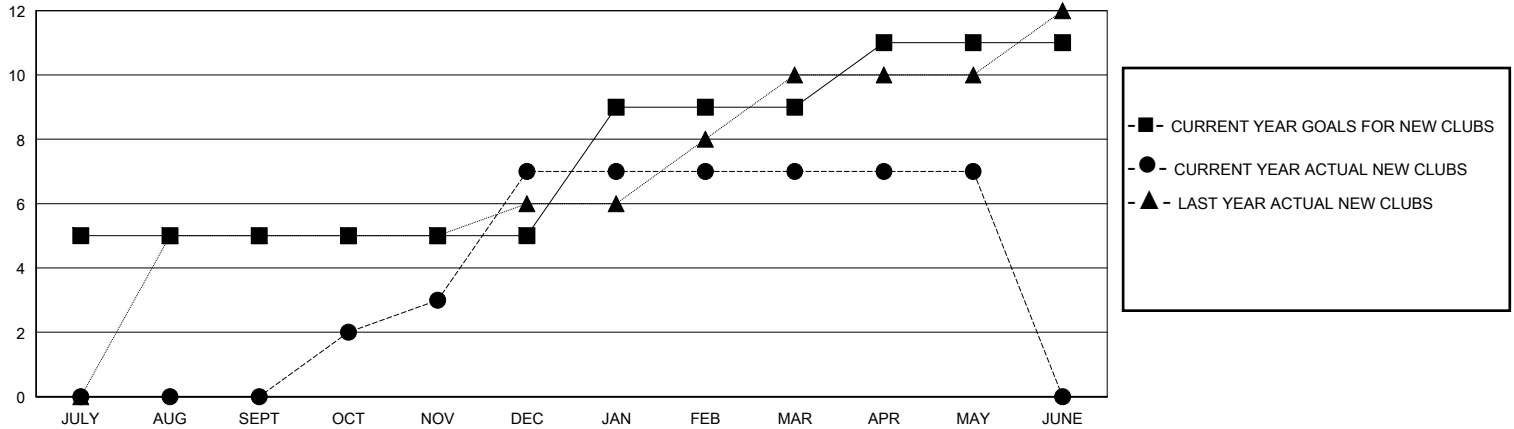
LOCATION INDIA

GMT CA

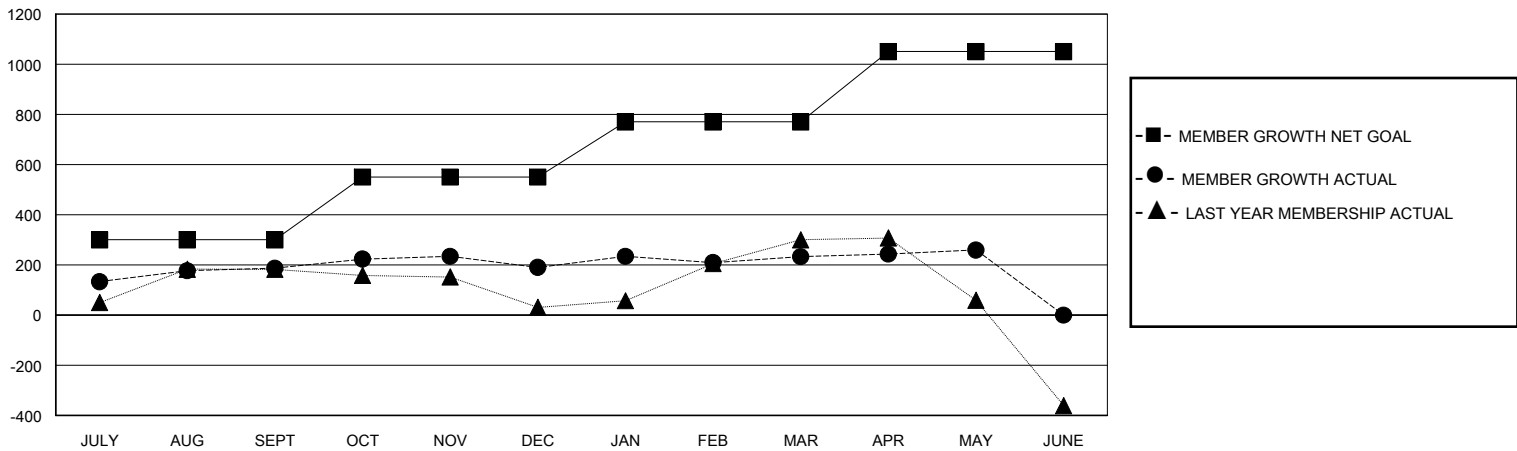
Clubs			
RESULTS FOR 2023-2024			
QUARTER	NEW CLUB GOAL	NEW CLUBS	DROPPED CLUBS
JULY/AUG/SEPT	5	0	1
OCT/NOV/DEC	0	7	3
JAN/FEB/MAR	4	0	3
APR/MAY/JUNE	2	0	1

Members			
RESULTS FOR 2023-2024			
QUARTER	MEMBER GROWTH NET GOAL	MEMBER GROWTH ACTUAL	DROPPED MEMBERS ACTUAL (including transfers)
JULY/AUG/SEPT	300	308	96
OCT/NOV/DEC	250	267	252
JAN/FEB/MAR	220	148	92
APR/MAY/JUNE	280	55	27

GOALS AND ACTUAL NEW CLUBS CUMULATIVE



GOALS AND ACTUAL MEMBERS CUMULATIVE



DROPPED CLUBS: 8

113 CLUBS OF 160 ADDED 1 OR MORE NEW MEMBERS

GENDER DISTRIBUTION

MALE 3,385 (75.54%)
FEMALE 1,095 (24.44%)

DROPPED MEMBERS

DECEASED	23
CLUB CANCELLED	109
OTHER	335
TOTAL	467

[CLICK HERE FOR CUMULATIVE MEMBERSHIP DATA](#)

TOTAL FAMILY UNIT MEMBERS	1,780
FAMILY MEMBERS PAYING HALF DUES	949